

# Luxury Waterfront Home | Lot 6C



JUNIPER RIDGE

POSSUM KINGDOM LAKE



## Juniper Ridge

### WATERFRONT LOT 6C

3,195 SF

3 BEDS

3.5 BATHS

LAKEFRONT ELEVATION



REAR ELEVATION

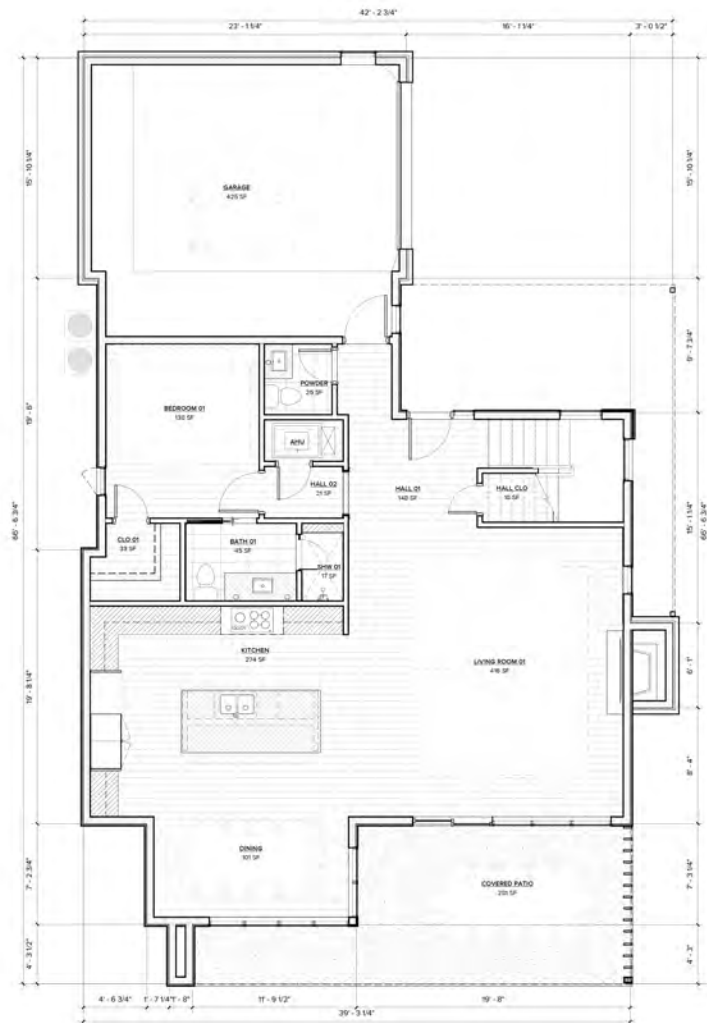


**Juniper Ridge**  
**WATERFRONT**  
**LOT 6C**

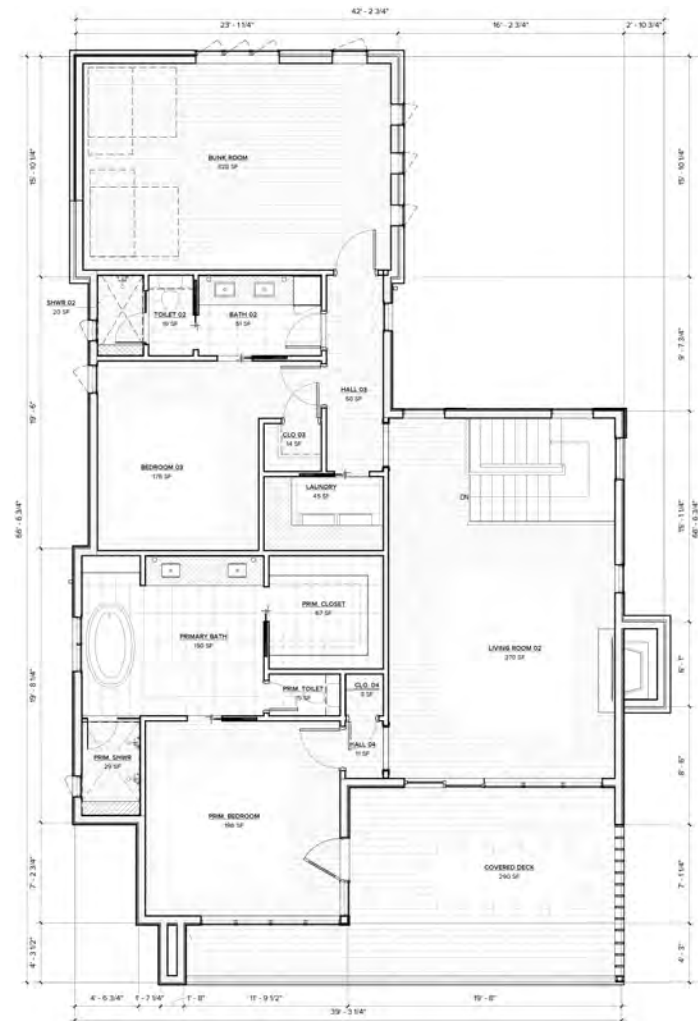
**3,195 SF**  
**3 BEDS**  
**3.5 BATHS**

**AIR CONDITIONED AREA: 3,125 SF**  
 - FIRST FLOOR 1,425 SF  
 - SECOND FLOOR 1,770 SF  
 - GARAGE 484 SF  
**TOTAL ENCLOSED AREA: 3,679 SF**

**OUTDOOR SPACE:**  
 - COVERED PATIOS 622 SF  
 - TRELLIS 216 SF  
**TOTAL AREA UNDER ROOF: 4,301 SF**



LEVEL 1



LEVEL 2

# Juniper Ridge

## WATERFRONT LOT 6C

3,195 SF

3 BEDS

3.5 BATHS

### THIS LUXURY WATERFRONT HOME OFFERS:

- SPECTACULAR LAKE VIEWS
- EXCEPTIONAL LUXURY FINISHES THROUGHOUT
- OPEN CONCEPT LIVING
- AMPLE NATURAL LIGHT
- ENTERTAINING SPACES
- GENEROUS OUTDOOR LIVING
- WALKING DISTANCE TO LAKESIDE SWIMMING POOL
- OPTION TO PURCHASE A BOAT SLIP

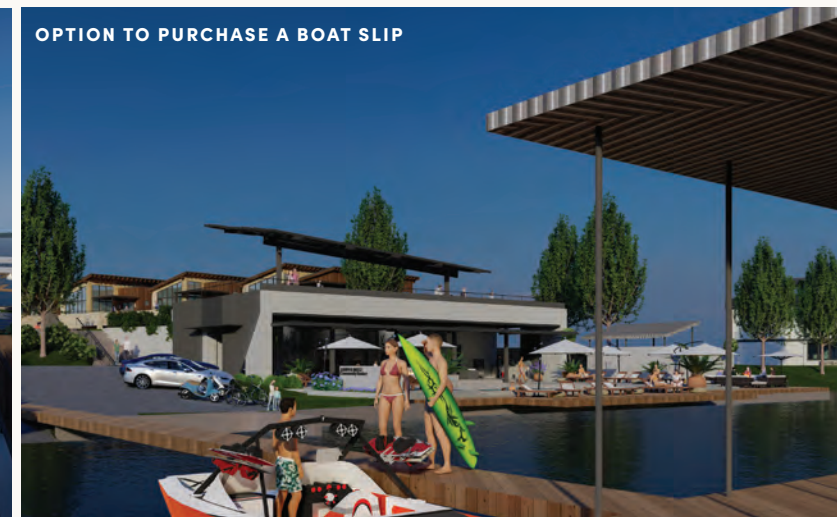
LAKESIDE SWIMMING POOL

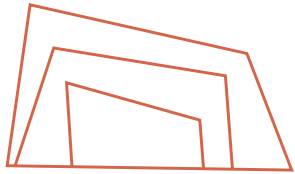


THE VILLAGE GREEN



OPTION TO PURCHASE A BOAT SLIP





# JUNIPER RIDGE

POSSUM KINGDOM LAKE

Learn more about this Luxury  
Waterfront floorplan and Possum  
Kingdom Lake living at its finest.

940.290.2610

[sales@jr-pk.life.com](mailto:sales@jr-pk.life.com)

[www.jr-pk.life.com](http://www.jr-pk.life.com)

  /juniperridge.pk



Maps not to scale. All renderings are an artist's representation for illustrative purposes only. Details are subject to modifications without notice. All maps and graphics are solely for illustrative purposes and should never be relied upon for legal purposes. Photos are used to represent lifestyle and do not show Juniper Ridge property. The information and designs contained in this artwork cannot be used or reproduced without prior written consent of Juniper Ridge. © Juniper Ridge 2022

