

The Driftwood



JUNIPER RIDGE

POSSUM KINGDOM LAKE

The Driftwood

LOT 11

2,885 SF

4 BEDS

4.5 BATHS

The Driftwood at Juniper Ridge boasts bright, open living areas on its second level, surrounded by impressive lake views. Handsome accommodations for family and guests alike, three generous bedrooms with their own baths are joined by a first level primary suite that opens onto an elegant patio space.



THIS LAKEVIEW VILLA OFFERS:

- LUXURY FINISHES
- OPEN CONCEPT
- NATURAL LIGHT
- AMPLE ENTERTAINING SPACE
- GENEROUS OUTDOOR LIVING
- WALKING DISTANCE TO
LAKESIDE SWIMMING POOL

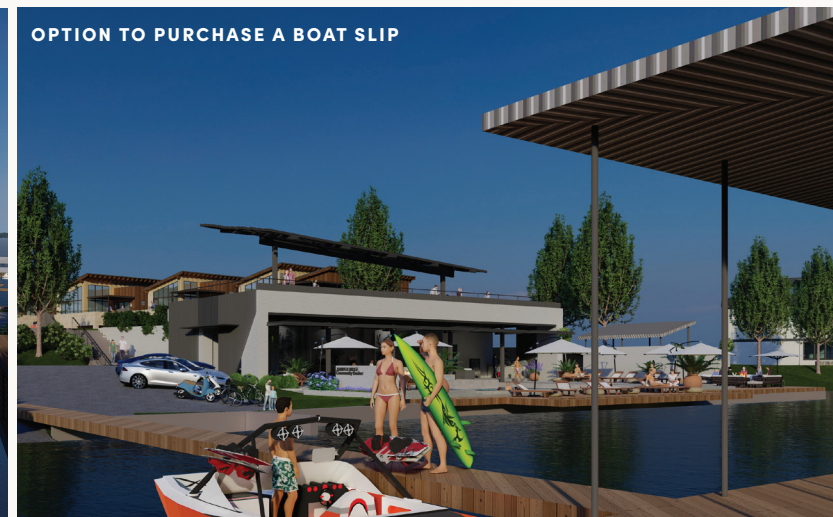
LAKESIDE SWIMMING POOL



THE VILLAGE GREEN



OPTION TO PURCHASE A BOAT SLIP



The Driftwood

LOT 11

2,885 SF

4 BEDS

4.5 BATHS



The Driftwood

LOT 11

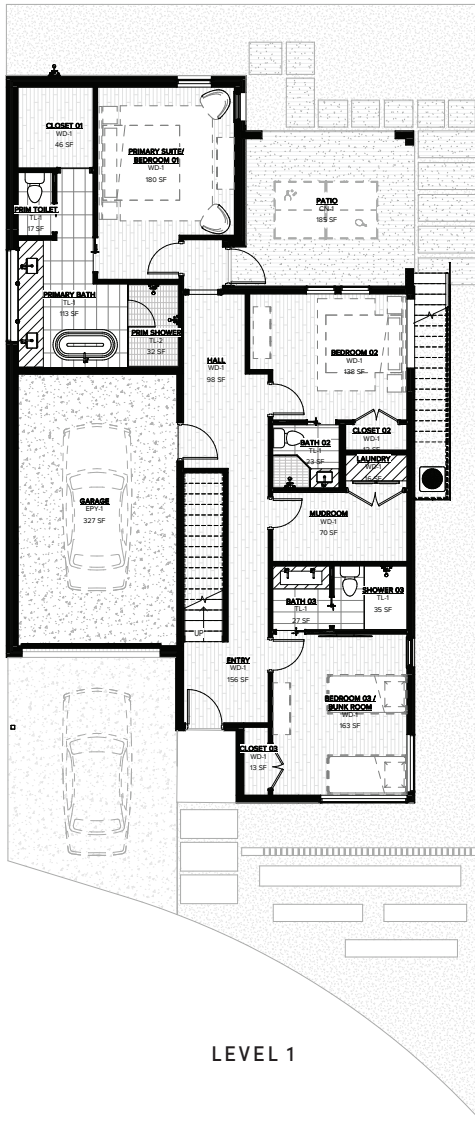
2,885 SF
4 BEDS
4.5 BATHS

AIR CONDITIONED AREA: **2,885 SF**
 - FIRST FLOOR 1,382 SF
 - SECOND FLOOR 1,503 SF
 - ENCLOSED AREA 358 SF
TOTAL ENCLOSED AREA: **3,243 SF**

OUTDOOR SPACE:
 - TRELLIS 217 SF
 - COVERED PATIOS 202 SF
TOTAL AREA UNDER ROOF: 3,445 SF



LEVEL 2



LEVEL 1

FEATURES

- 4 bedrooms, 4.5 baths
- Large, open living/dining
- 3 full baths and bedrooms on first level
- Upstairs kitchen, features large island with seating
- Expansive patios with fireplace on second level
- First level primary suite with walk-in closet accessible through primary bath that features standalone tub

SPECIAL TOUCHES & MODERN ELEGANCE

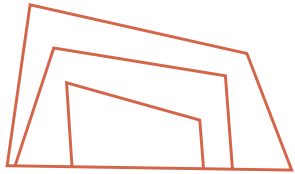
LUXURY FINISHES grace every square foot of The Villas. Polished concrete floors, tiles and counters that complement the Hill Country Modern aesthetic, and fixtures that are both refined and bold.





CASUAL LUXURY LOOKS INCREDIBLE & LIVES BEAUTIFULLY.

Each Juniper Ridge Villa has a curated collection of materials, fixtures and finishes. Speak with a Juniper Ridge representative to see individual products and selections.



JUNIPER RIDGE

POSSUM KINGDOM LAKE

Learn more about this Lakeview
Villa floorplan and Possum Kingdom
Lake living at its finest.

940.290.2610
sales@jr-pk.life.com

www.jr-pk.life.com

f **@** /juniperridge.pk



Maps not to scale. All renderings are an artist's representation for illustrative purposes only. Details are subject to modifications without notice. All maps and graphics are solely for illustrative purposes and should never be relied upon for legal purposes. Photos are used to represent lifestyle and do not show Juniper Ridge property. The information and designs contained in this artwork cannot be used or reproduced without prior written consent of Juniper Ridge. © Juniper Ridge 2022

